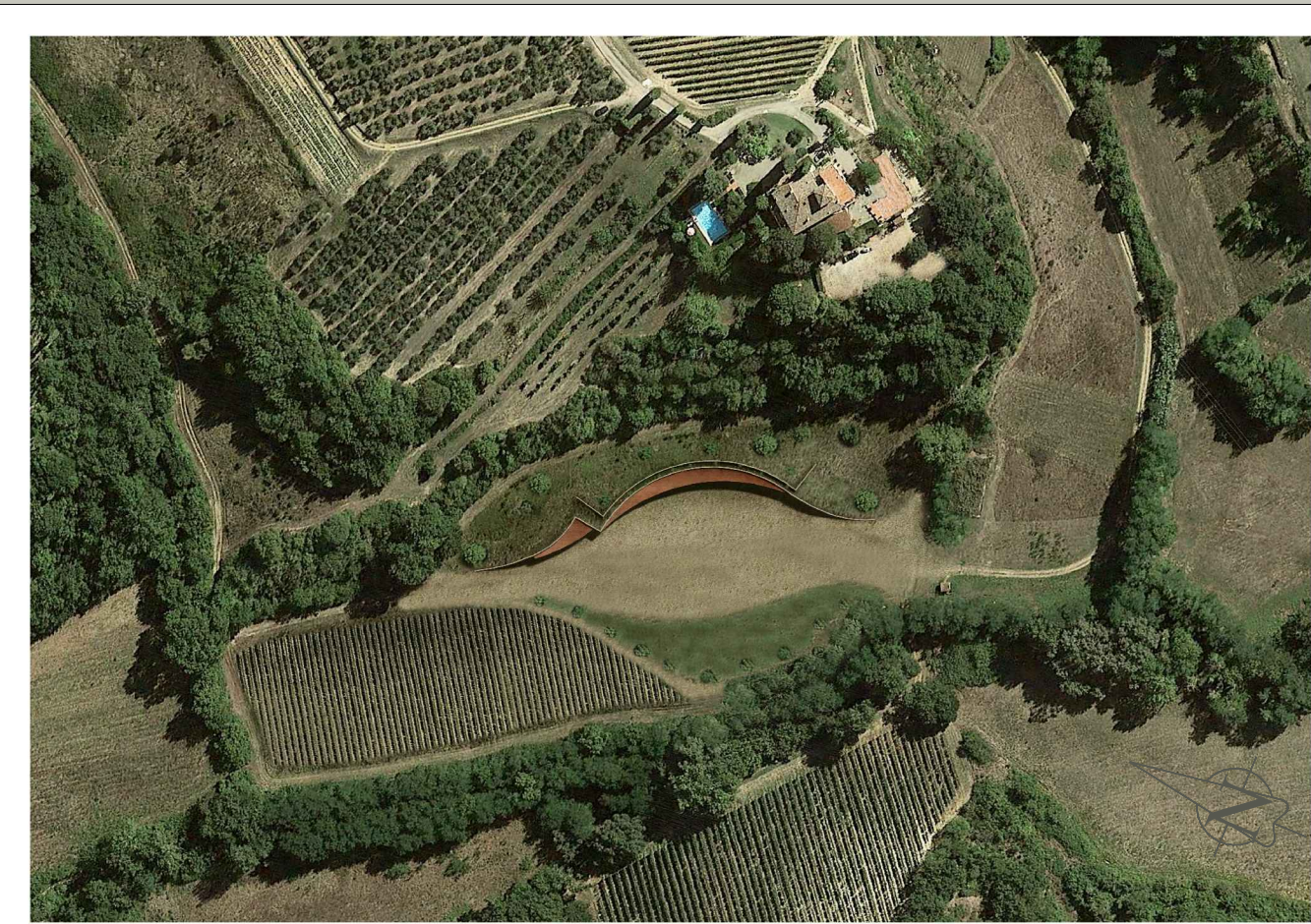


COMUNE DI TAVARNELLE VAL DI PESA

CITTA' METROPOLITANA DI FIRENZE

Azienda Agricola "POGGIO ROZZI" loc. Romita, Via Romita n° 29



Richiedente:"Azienda Agricola Poggio Rozzi di Eberhard Toggenburg"

Proprietario:dott. Ulrich Toggenburg

dott.agr. Michele Lotti Margotti

geom. Luca Anichin

dott. ing. Daniele Lapi

dott.geol. Maria Angela Botta

PIANTE, SEZIONI, CALCOLO VOLUME E SUP. UTILE

TAV.
13.A

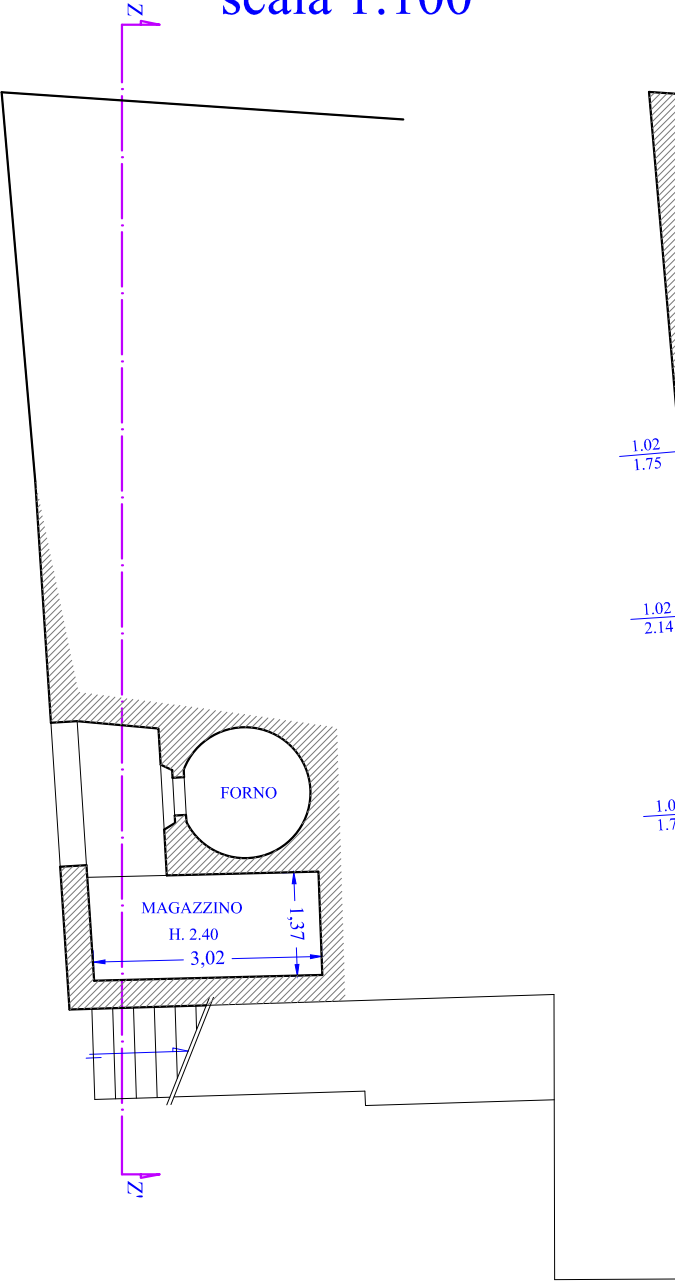
DICEMBRE '16

scala 1:100

STATO ATTUALE

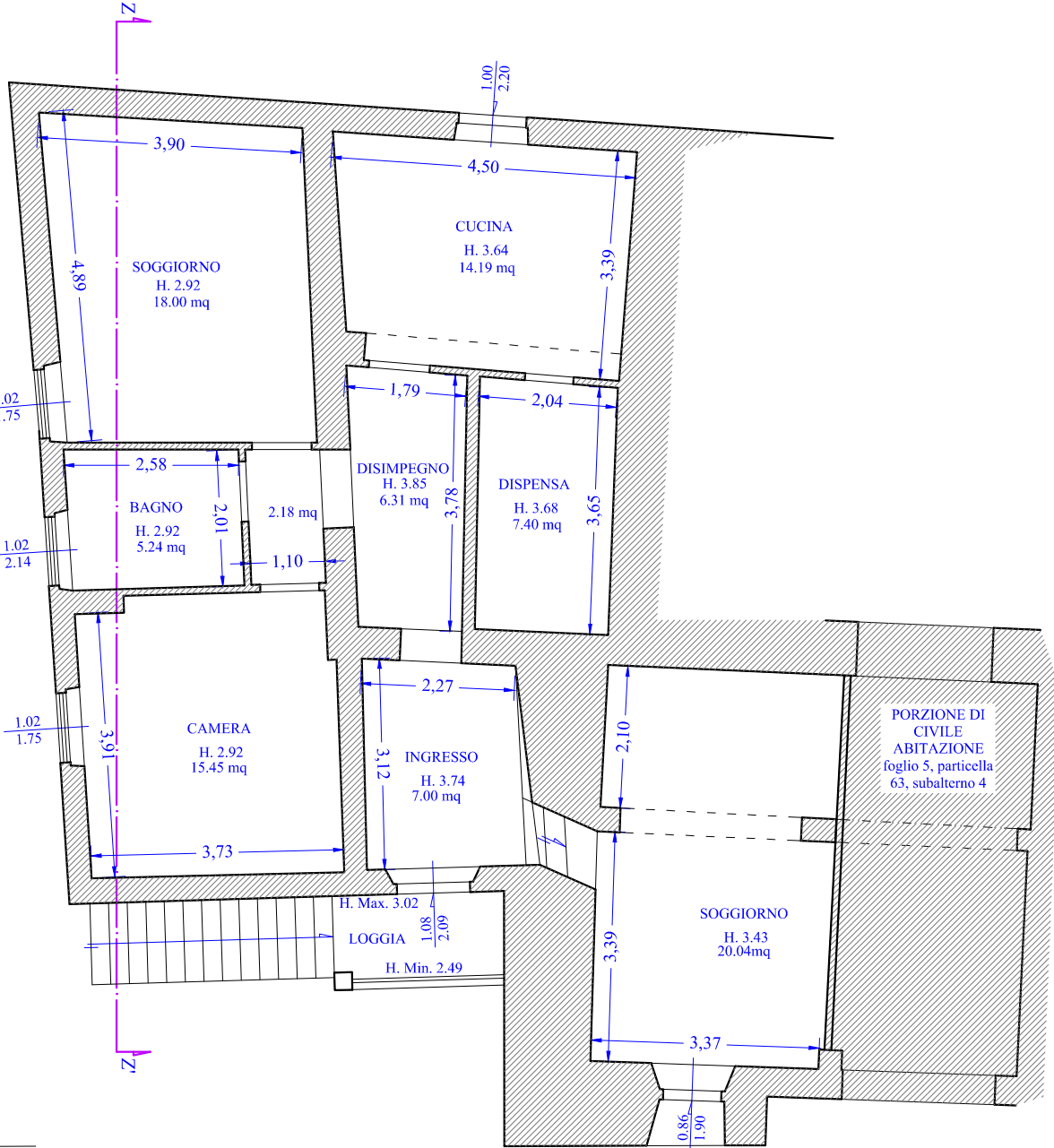
PIANO SEMINTERRATO

scala 1:100



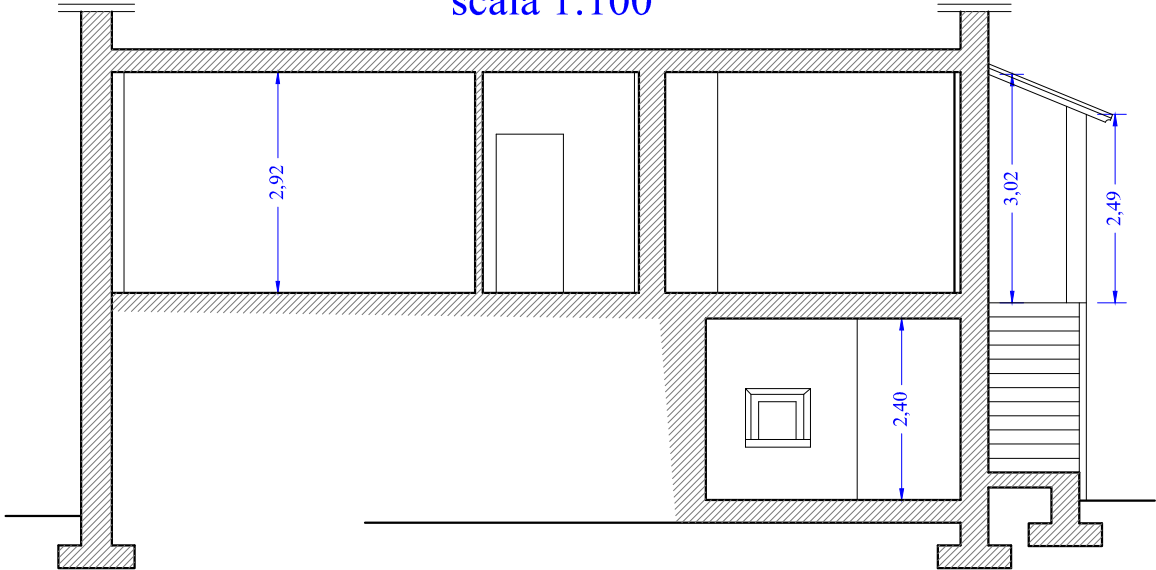
PIANO TERRENO

scala 1:100

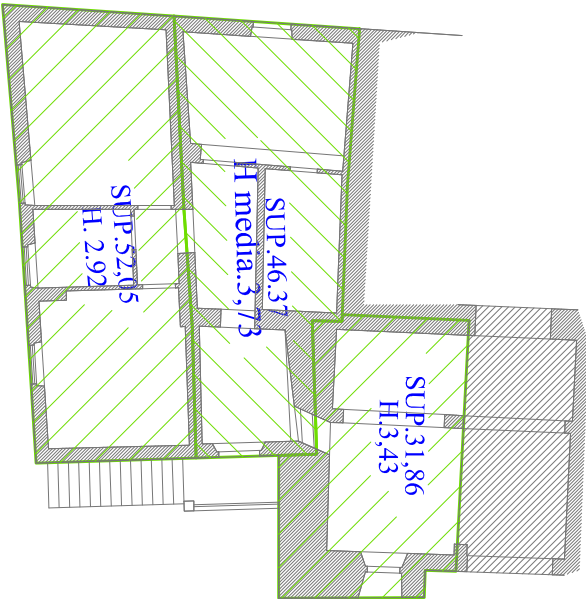


SEZIONE Z-Z'

scala 1:100

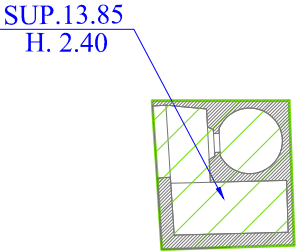


PIANO TERRENO-PRIMO



PIANO SEMINTERRATO

scala 1:100



CALCOLO VOLUME COME DA PAPMAA

SUP. UTILE PIANO SEMINT. =6,28 mq
SUP. COPERTA PIANO SEMINT. =13,85 mq
VOLUME = SUP,COPERTA X H.+0,30=
= 13.85 x 2,40+0,30 = 37.39 mc

SUP. UTILE PIANO TERRENO-PRIMO =95,81 mq
SUP. COPERTA PIANO TERRENO-PRIMO =130,28 mq
VOLUME = SUP,COPERTA X H.+0,30=
= (52,05 x (2,92+0.30))+ (46.37 x (3.73+0.30))+(31,86 x
x (3.43+0.30))= 473,31

VOLUME TOTALE= 510,70 mc